



StoveCAT Model 0608-01

The **StoveCAT** Model 0608-01 is designed for wood stoves and furnaces with 6" exhaust piping. This model is 13" high and 8" wide. It uses a single stage 6" or 7" catalytic component from Clear Skies Unlimited treated with a Platinum Catalyst designed especially for reducing wood smoke emissions.



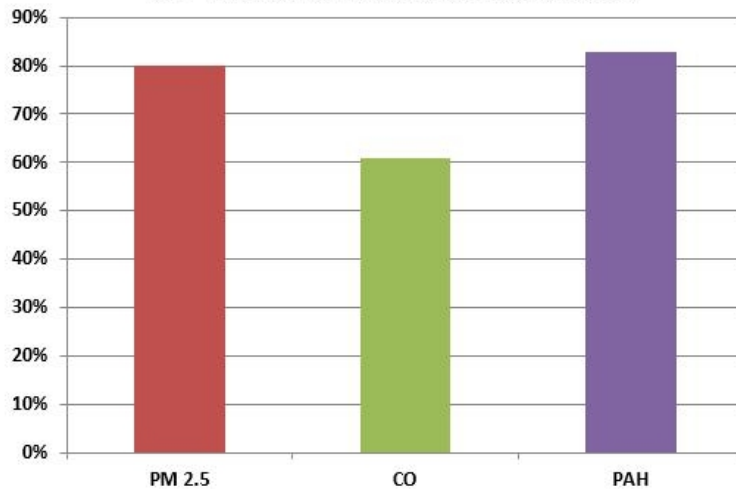
StoveCAT Model 0608-01

The **StoveCAT™** Emission Control Device from Healthy Hearth LLC is a revolutionary catalytic system designed especially for wood burning stoves. The **StoveCAT™** utilizes a patented catalytic design to capture the pollutants from the wood burning fire without developing any back pressure or harmful blockage. The **StoveCAT™** Catalytic System provides secondary ignition for the wood smoke combustibles preventing them from leaving the wood burning appliance as particulate pollution. A direct flame on the catalytic surface will clean the catalytic unit.

During normal operation, when the wood stove reaches approximately 350F, the catalytic system will become active and produce exhaust temperatures ranging from 600F to 800F. The heat produced by the **StoveCAT** Emission Control Device ECD will destroy most of the

PM2.5, VOC's and Carbon Monoxide. The **StoveCAT** Model 0608-01 will reduce particulate emissions by 80%, CO emissions by 60% and PAH and VOC emissions by over 80% as tested @ Omni Environmental.

Mean Reduction in Emissions for StoveCAT Wood Heater Retro-Fit Compared to Baseline on Two Uncertified Wood Stoves



The **StoveCAT™** is easily installed. It doesn't require any power or maintenance and has no moving parts. The **StoveCAT™** device is installed on the exhaust port of the wood stove. The installation of the **StoveCAT™** converts a conventional wood burning stove into a cleaner burning heater with better heating efficiency.



StoveCAT Model 0608-01



Model 1066-01 Technical Data

FEATURE	SPEC OR DIMENSION	COMMENT
Weight	4 Lbs 10 Ounces	Total Gross Weight
Dimension Height	13"	Standing height
Dimension Width	8"	8" Center / 6" ends
Clearance for Combustibles	18" Minimum	Safety Specification
Catalytic Combustor Dimension	7" Round x 1" Thick	Platinum Catalyst
Bracket Material	Series 430 Stainless Steel	20 Gage Thickness
Housing Material	Steel	24 Gage Thickness (HeatFab)
Application	Maximum Output 60,000 BTU	Use Larger Device for Larger Stoves

Healthy Hearth LLC
 30521 Coplaza St
 Lake Elsinore, CA 92530

www.healthyhearth.net