

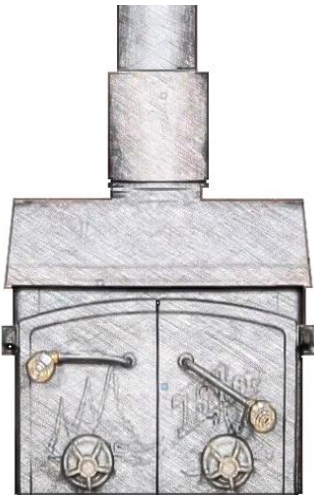
StoveCAT™ Retro-Fit Installation 0808

Congratulations! You have purchased the Series 0808 **StoveCAT™**, a revolutionary Emission Control Device for wood burning stoves, heaters and furnaces that have an 8" exhaust pipe. Follow these instructions carefully for safe and efficient operation. You will find additional information @ www.healthyhearth.net

The StoveCAT™ Emission Control Device for Wood Stoves

The **StoveCAT™** Emission Control Device from Healthy Hearth LLC is a revolutionary catalytic system designed especially for wood burning stoves and furnaces. The **StoveCAT™** utilizes a patented multi-stage catalytic design to capture the pollutants from the wood burning fire without developing any back pressure or harmful blockage.

The **StoveCAT™** Catalytic System provides secondary ignition for the wood smoke combustibles preventing them from leaving the firebox as particulate pollution. The direct flame on the catalytic surface actually cleans the catalytic unit.



The internal components of the **StoveCAT™** 0808 are manufactured from high quality stainless steel by DuraVent, the world's largest venting component manufacturer. The catalytic components are state-of-the-art ceramic material from Clear Skies Unlimited. The **StoveCAT™** can either be installed by a chimney professional or as a "Do-it-Yourself" project by the homeowner.

The **StoveCAT™** 0808 is easily installed. It doesn't require any power and has no moving parts. The **StoveCAT™** catalytic device is installed on the top of the exhaust port of the wood heater. The installation of the **StoveCAT™** converts a conventional wood burning appliance into a cleaner burning heater with better heating efficiency.

These instructions allow for the fast and easy installation of the emission control device on the wood heater for safe and efficient use. **SAFETY IS MOST IMPORTANT ! Follow all Safety Instructions closely.**

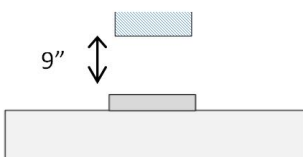
Inspection of the Existing Connector Pipe

The **StoveCAT™** ECD 0808 is a catalytic device and produces a flu temperature up to 1000F. It is very important to inspect your existing connector pipe for any creosote build-up on the inside of the pipe. If there is creosote in the connector pipe, the pipe should be cleaned or replaced prior to the installation of the **StoveCAT™**.

CAUTION

The high temperatures produced by the **StoveCAT™** ECD 0808 can cause a "chimney fire" if your stove pipe is coated with creosote. Class A chimney pipe is required to vent fireplaces, boilers and furnaces that burn oil, wood or coal. It will properly contain the heat from the **StoveCAT™**. It must meet Underwriter Laboratory standard UL103 which is which requires operation at a continuous temperature of 1000 F.

Preparing the Existing Connector Pipe for Installation of the StoveCAT™



The **StoveCAT™** ECD is 12" high. It is designed to be installed on a top mounted 8" exhaust port. You need to remove 9" of connector pipe to make the installation.

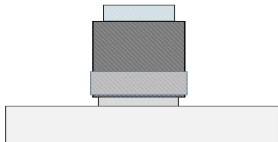
The **StoveCAT™** ECD 0808 is constructed from an 8" X 12" section of Duravent DVL double wall connector pipe. It offers several connection options for 8" single wall pipe or 8" DVL Pipe from DuraVent.

You can also use telescopic pipe that offers flexibility in cutting the pipe to create a 9" opening. Insure that the mounting surface is clean. (See "Installing the Connector Pipe After Positioning the **StoveCAT™** on back page.)

Position the StoveCAT™ ECD on the Exhaust Port on the Wood Stove

The **StoveCAT™ ECD** is easily installed on the wood heater. It simply slips over the 8" OD exhaust port. There are no fasteners or mechanical connections. It is very important however that the mating surface on the bottom of the **StoveCAT™** goes over the exhaust port or the flue collar on the stove. Insure that the **StoveCAT™** is aligned properly. No gaskets are required to install the **StoveCAT™**. It will seal on the mounting surface of the wood stove.

Align the StoveCAT™ ECD on the Exhaust Port



The **StoveCAT™** has an 8" female opening on each end. It is designed to have 8" OD single wall connector pipe or 8" DuraVent DVL inserted into each end of the StoveCAT. The connector pipe should be inserted 1.5" into the StoveCAT. A mark that is 1.5 inches from the ends of the 8" connector pipe should be applied to assure proper insertion depth.

CAUTION

It is very important that the mating surface on the bottom of the **StoveCAT™** goes outside of the exhaust port on the stove. Insure that the **StoveCAT™** is aligned properly prior to the insertion of the connector pipe.

Adapting the StoveCAT™ to Fit Properly onto the Wood Stove

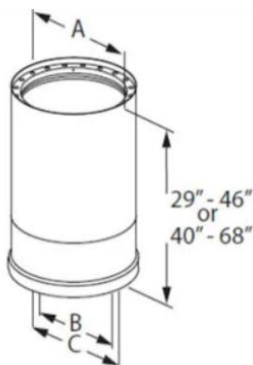


In some cases, the mounting connection on the wood heater is not an 8" OD male connection. If that is the case, a section of 8" OD stove pipe should be inserted into the exhaust port of the wood stove and into the 8" female opening on the bottom of the **StoveCAT™** or you can use an adapter to join the **StoveCAT™** to the flue collar as shown on the right. Insure that the **StoveCAT™** is properly secured prior to moving on to the next step.



Imperial Manufacturing
BM0049 8" Black
Double Male Connector
Union (\$12 Online)

Installing the Connector Pipe After Positioning the StoveCAT™



Once the **StoveCAT™** is properly mounted on the flue collar of the wood heater, you can install the connector pipe. Remember, if you are using single wall black pipe, the 8" pipe needs to be inserted 1.5" into the **StoveCAT™**. **Getting a proper pipe connection seal on the top of the StoveCAT™ is an important safety consideration.**

OPTION: Many homeowners use telescopic DVL pipe for the **StoveCAT™** installation. (See picture on left). There are two options in selecting the proper length of adjustable pipe: (1) Duravent part number 8DVL-46TA adjusts from 29" to 46". (2) Duravent part number 8DVL-68TA adjusts from 40" to 68". Once the pipe is adjusted and secured, the **StoveCAT™** is properly installed.

| SIZE | 8" | |
|-----------|---------|-----------|
| A | 9" | |
| B | 8" | |
| C | 9 1/8" | |
| 29" - 46" | ORDER # | 8DVL-46TA |
| | STOCK # | 810000944 |
| 40" - 68" | ORDER # | 8DVL-68TA |
| | STOCK # | 810000945 |

Insure that the **StoveCAT™** is installed with both temperature gages in an upright position and facing forward. Check all connections!

CAUTION

The first time that the wood stove is operated after installation of the **StoveCAT™**, the stove should be monitored for any smoke spillage. Check the mounting connection on the top of the stove and the connector pipe for any leakage. If there is

any smoke leakage, properly ventilate the room and allow the fire in the appliance to go out.

Email Healthy Hearth @ cleanfireplaces@yahoo.com with any problems or questions.